

**SFGRF Scholarship
Committee Member
Highlight**

Committee Member:
Deb Prentice



As a member of the SFGRF Scholarship Committee, I now see firsthand the impact these contributions have and the real challenges facing our students. Reviewing applications, I'm often moved by the resilience of these young people who've overcome obstacles like personal or family health issues or difficult home situations. This experience has only deepened my commitment to helping them access the resources they need. Financial support, mental health resources, and educational assistance are all urgently needed in our community. The SFGRF is only one organization, but it's a vital starting point, and I hope you'll consider supporting our efforts for the students and families of Ravalli County.

Arnie and I channel our philanthropic efforts to organizations focused on educational and environmental issues. This is why the Stock Farm Greater Ravalli Foundation, with its commitment to providing scholarships for Ravalli County high school seniors, was an obvious choice for us. We firmly believe that education, whether through college or trade schools, offers individuals the opportunity to succeed in any field. We are living proof of what can happen when someone or an organization takes a risk by believing in you and backing that belief with financial support. Through the foundation, Deb Gabelhausen and the Executive Board go beyond scholarships to support students throughout the school year, providing not only encouragement but essentials like warm clothing and teaching supplies to the Valley's teachers.

A Heartfelt Thank You
**and an Invitation to Make a
Lasting Impact**

Dear Stock Farm Club Members,
As we approach the end of another remarkable year, I want to take a moment to express my deepest gratitude for your unwavering support of the Stock Farm Greater Ravalli Foundation. Your generosity has been a driving force behind the meaningful progress we've made toward our mission. As you will read in this newsletter, your contributions make a direct impact on Stock Farm Club employees and our community. Thanks to your commitment, we have been able to expand our scholarship program to include post-graduate funding for our recipients. We've also been able to improve and expand our cold weather gear distribution which has seen a 200% increase over the last 2 years. We have made tremendous strides in youth mental health providing professional development training for all Ravalli County teachers and staff, all because of your generosity!

It is only through the collective efforts of donors like you that we can continue to make a tangible difference in the lives of those who need it most. Currently we are serving an additional 135 children living in RVs with no running water. With Victor and Darby School districts on 100% free lunch, we see tremendous needs within these communities. With your help, we can provide much needed necessities to these children. We are so fortunate to

have you as a part of our community, and I truly believe that together, we are building something lasting and transformative.

As we look ahead to 2025, we are excited about the opportunities and challenges that await. But, as always, we rely on the generosity of donors like you to help us continue our important work. With the end of the year fast approaching, I invite you to consider making a contribution to ensure that we can start the new year with the resources needed to carry out our mission. Your year-end gift will help us provide scholarships to Stock Farm Club employees, 42 scholarships to graduating high school seniors, grocery cards and clothing to those in need, provide much needed youth mental health support, and grants to community partners.

No gift is too small, and every donation, no matter the size, will make a difference. To make a contribution, simply visit our website **SFGRF.org** or feel free to reach out if you have any questions.

Once again, thank you for your ongoing support and belief in our work. We couldn't do it without you, and we are incredibly grateful for your partnership.

Wishing you a joyful and peaceful holiday season.

Warmly,

Deb Gabelhausen,

Executive Director

**BOARD MEMBERS AND
FOUNDATION OFFICERS**

Executive Director

Deb Gabelhausen

President & Co-Founder

Jim Coté*

Jim Schueler*

Treasurer

John Talia*

Club General Manager

Steve Buck*

Board Members

Mike Canning*

Kirk Fernandez

Jim Mc Nerney

Charles Schwab

Wes Spiker*

Karen Talbot*

Katy Ehlen

Sonny LaSalle*

*Executive Board Members

Emeritus Board Members

Craig Angelo

Barbara Barrett

Craig Barrett

Nina Bonnie

Paul Ehlen (Deceased)

Matt Guzik

Eff Martin

Susan Speicher

Don Valentine (Deceased)

Bill VanCanagan, Attorney

Stock Farm Employee Scholarship Notes of Thanks

Wow, what a wild ride it has been. College was never something I was very intrigued by, but now that I am here, I couldn't have imagined starting my life any other way. I have been blessed with unique learning experiences and new friends who I now consider to be family. College has been a steppingstone that has opened many doors and showed me that I am capable of cooking for myself every night! The Stock Farm Greater Ravalli Scholarship was the only reason my plans on life changed and I began my new adventure working towards a degree. Thank you to all the donors who have given me a chance to expand my knowledge and to have a foundation to always be able to fall back on. I will be graduating with a degree in Natural Horsemanship and Business in 2026 and plan to chase a career in Equine Insurance. This dream could not have been done without the help of the donors, membership, and all the other lovely individuals who have held the doors open for me along the way.



HAILEE BERRY



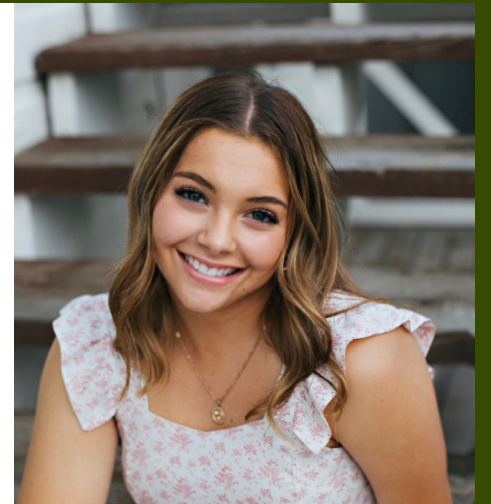
AARON NAVARRO

I am really grateful to the Stock Farm Greater Ravalli Foundation for the scholarship awarded to me for furthering my education at the University of Montana. Receiving this scholarship is a great honor to me and my family. Not only because of its financial award toward college, but also because it is a recognition and belief in my abilities and my aspirations for the future. As an employee at the Stock Farm club, I work alongside my dad who is the Executive Sous Chef. I have learned from him what hard work and dedication means. I plan to work hard to take full advantage of this opportunity which will open up great opportunities for my future. Thank you Stock Farm Greater Ravalli Foundation for this generous scholarship which will lift a considerable financial burden off myself and my family and allow me to focus my time and energy on my education! I hope to give back to the community and the foundation one day to help other students reach their educational goals.

My name is Milana Bestor, I am born and raised in the Bitterroot Valley and graduated from Corvallis High School. Currently I am living in Phoenix, Arizona pursuing my bachelor's in marketing and advertising at Grand Canyon University. I started working at the Stock Farm Club in May right before the summer of my junior year of high school. I have since been employed there right up until a few months ago when I left for college in Arizona.

Working at the Stock Farm Club has been an incredibly enriching experience that has significantly shaped my personal and professional growth. Working at Stock Farm Club has helped me develop valuable skills in customer service, teamwork, and leadership, all while interacting with an incredible group of members and staff. The hands-on experience has enhanced my communication abilities and taught me the importance of attention to detail. Beyond the practical skills, I've built lasting relationships and a strong sense of community. Working for Stock Farm has not only prepared me for future career endeavors but has also deepened my appreciation for the hospitality industry and the connections that can be made.

Receiving the Stock Farm Greater Ravalli Scholarship was such a significant moment for both my family and I and presented me with such an opportunity in furthering my education after high school. It alleviated the financial burden of pursuing my education, allowing me to focus on my studies and attend a university of my choice out of state. I am immensely grateful for the generosity and kindness of the Stock Farm Greater Ravalli Foundation, not only for this scholarship but also for the experience and pleasure of being able to work for such an incredible establishment. My family and I are also immensely thankful to the donors whose kindness made this possible. The opportunities that this scholarship has given me truly makes all the difference and I couldn't be more grateful.



MILANA BESTOR

SCHOLARSHIPS

Amount awarded for scholarships to date

\$5,600,000

STUDENTS RECEIVING
SCHOLARSHIPS

#442

GRADUATION RATE

90%

2024 RECIPIENTS

40%

First Generation
College students



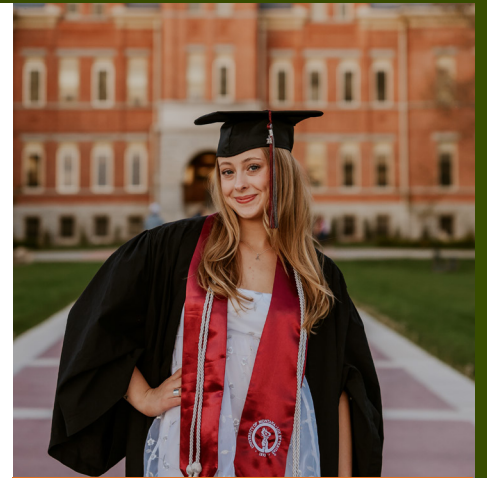
DAWSON BERGLUND

Receiving the Stock Farm Greater Ravalli Foundation Employee Scholarship meant that I could pursue my passion of historic preservation without the stress of college costs, something my family and I are tremendously grateful for. Instead of working to pay off tuition, I was able to volunteer at Trail of Tears State Park along the Mississippi River, work alongside my professor preparing draft nominations for the National Register of Historic Places, and even write radio scripts for my university station KRCU – experiences made possible thanks to this scholarship. Receiving this scholarship has also shown me that the club truly cares about its employees and wants to see them succeed. I have never worked at an establishment so invested in their staff as this one, and that is what means the most to me. Without this wonderful opportunity, I would not be where I am today.

Hello! My name is Cady Rollins. I am fortunate to say that I grew up in the amazing Bitterroot Valley, having graduated from Hamilton High School in 2020. Before my big adventure called “college” started in the Fall of 2020, I had decided to look around Hamilton for a place of employment. That is when a fellow classmate let me know about the opportunity she had at the Stock Farm Club. I sent in my application and haven’t looked back since. I learned so much during my time working with the Stock Farm Club as a server. I not only learned customer service skills, but I also learned about myself, and what the Stock Farm Greater Ravalli Foundation was all about. As I would work, I would pass the information table and read the seasonal newsletter, much like this one. It was so touching reading and seeing the impact this foundation had on so many people.

Having graduated in 2020, I had to navigate the first of my college life amidst the pandemic. While this was a challenge, one stress that was relieved through the courtesy of the Stock Farm Greater Ravalli Foundation, was that of how I would afford being there. I am so grateful I was chosen to receive the scholarship, as was my family. Due to unusual circumstances growing up, I was unsure of how I would be able to afford school, but thanks to the SFGRF, I was seeing my dream as obtainable. My family saw how much this scholarship helped me and encouraged my younger brother to apply. I was so happy to hear when he also received the scholarship in 2023, and I was able to present him with the Charles and Helen Schwab Award, which I had also received during my time. When I felt the tears in my eyes during that very moment, I knew that his life was going to be changed as well.

I chose to attend the University of Montana, obtaining a degree in May of 2024 in Elementary Education. My family is so proud, as I am a first-generation college student, and I couldn’t be more thankful for all of their support. Now that I have graduated, I will be leaving for Montenegro to teach English through the Peace Corps. I am so excited to see where life takes me, and I couldn’t have done it without the SFGRF and all of its donors, so THANK YOU! Your contribution is not unnoticed, and truly makes such an impact on so many lives. Thank you!



CADY ROLLINS.



BENNETT BOELMAN

I’m Bennett Boelman. I was born and raised in Montana, living most of my life in the beautiful Bitterroot valley. Some of my favorite hobbies are hunting, fishing and anything outdoors. During the summer I work at the SFC Shooting Center, I have really enjoyed my job the past three years and hope to continue working at the Shooting Center. I am a freshman at Montana State University pursuing a degree in business and aviation. I cannot express how grateful I am to receive the SFGRF scholarship. This scholarship is a true blessing and I cannot thank the SFGRF enough. This scholarship gives me the freedom to focus on school without needing to work, or be worried about how to pay for my schooling. I believe that this will help me excel academically. I am a third generation bobcat and coming to Montana State University means a great deal to myself and my family. Receiving this scholarship means I can continue in my family’s footsteps. I will forever be grateful to the Stock Farm club, I have met some amazing people at the shooting range, and the SFGRF has provided me with a way to pay for my schooling. I cannot wait to continue my education, and work towards my future goals of being a pilot. Thanks again.

Our Mission

The Stock Farm Greater Ravalli Foundation seeks to financially support the growth and development of Ravalli County’s public education system by addressing three specific needs, which comprise the basis of daily life in Ravalli County.

EDUCATION

Provide technology, books, classroom supplies, and teacher support for Ravalli County public schools.

SCHOLARSHIPS

Provide college scholarships to high school graduating seniors attending two-year and four-year colleges or technical schools. Also provide workforce certified students and grants for non-profits and projects in Ravalli County.

SUSTENANCE

Provide grocery cards, meals and warm winter clothing for students and families in Ravalli County.

YOUTH MENTAL HEALTH

Fund professional development in youth mental health to all teachers in Ravalli County (550 teachers in the 2024 school year). In addition, help fund mental health resources in Ravalli County through specific grants.

Thanks

Dear Deb and the Scholarship Committee,

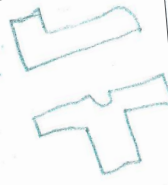
Thank you so much for awarding me the Greater Ravalli Foundation scholarship and for inviting me to the scholarship dinner. It was great to meet the committee members and other scholarship recipients, and to learn more about the foundation's activities. I am so grateful for your support and encouragement.

Sincerely,

Thank you for the shoes

Thank you for the coat

Thank you for the gloves



tonic from:

Deb,
Thank you for your continued support and generosity for both my CWU class and Science Olympiad. You, and TGRF, are one of the reasons these opportunities are possible for our students. I am enclosing some photos and description of some of the amazing experiences we had for both of these trips. Thanks again!

Sincerely,

Sam Haglock

Dear Stock Farm Greater Ravalli Foundation,

Thank you very much for the grant. As a student I have seen the Care Closet help countless people, even me myself. Your help makes our lives a little brighter.

Sincerely,
Maddie

Thank you so much for supporting the PLTW Biomedical curriculum at HHS. You are supporting our future medical professionals.

Thank you!
Ari
Thank you!
Haven
Thank you!
Toby
Thank you!
Eve
Thank you!
Ben
Thank you!
Avery
Thank you for your generosity! It means so much to me.
-Sim
Thank you!
-Jack & Erica
Thank you!
-Mica
Thank you for your support!
-Janet

Stock Farm Greater Ravalli Foundation,
Thank you for your generous donation & support for our Science Olympiad team. We are excited to represent our school, community, & state at the National competition. Thank you for making this possible.

Sincerely,
HHS Science Olympiad team

THANK YOU!

Greater Ravalli Foundation
Thank you so much for awarding me this scholarship. I am so excited to attend MSU in the fall and this financial help is greatly appreciated and helpful. My mom and I are also looking forward to the dinner at the Stock Farm.

Thank you
Jaladmar

FIVE WAYS TO DONATE

CHECK

You can donate by either filling out the donation remittance envelope that is included with this newsletter or by downloading and printing a pledge card then mailing it to the address on the card – go to SFGRF.org, click on DONATE/ download pledge card. For those older than 70- 1/2 with a traditional or rollover IRA, a direct Qualified IRA Charitable Distribution can be arranged through your IRA custodian.

ONLINE VIA PAYPAL OR CREDIT CARD

If you wish to make a donation by credit card, you can do so – go to SFGRF.org, click on DONATE/ donate through PayPal or credit card.

CHARITABLE REMAINDER ANNUITY TRUST

A trust from which you receive fixed income for a life or a term of years. Best for those older than 70 seeking to make a substantial gift and receive a higher income for a short period of time. Fund with cash or securities, typically \$100,000 or more. Benefits: Fixed income • Income tax deduction • No up-front capital gains tax on transfer of assets • Significant gift to use in the future

CHARITABLE REMAINDER UNITRUST

A trust from which you receive variable income (based on the trust's value each year) for life or a term of years. Best for those older than 55 seeking to make a substantial gift. Funded with cash, securities or other assets, typically \$100,000 or more. Benefits: Variable income • Income tax deduction • No up-front capital gains tax on transfer of assets • Allows additional gifts • Significant gift to use in the future

DONATION OF APPRECIATED PUBLICLY TRADED SECURITIES

When held for longer than one year, this can be arranged through your investment brokerage firm holding the securities and the SFGRF. You receive the value of the securities donated as an itemized deduction on your income tax return and you do not pay capital gains tax on the appreciation portion of the value of the publicly traded securities donated.

The information is not intended as legal or tax advice. For legal or tax advice, please consult your attorney or tax advisor. Figures cited in examples are for hypothetical purposes only and are subject to change. Reference to estate and income taxes apply to Federal taxes only. State income/estate taxes or state law may impact your results.